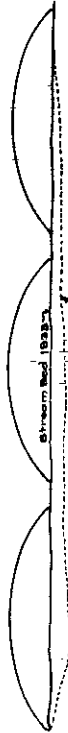
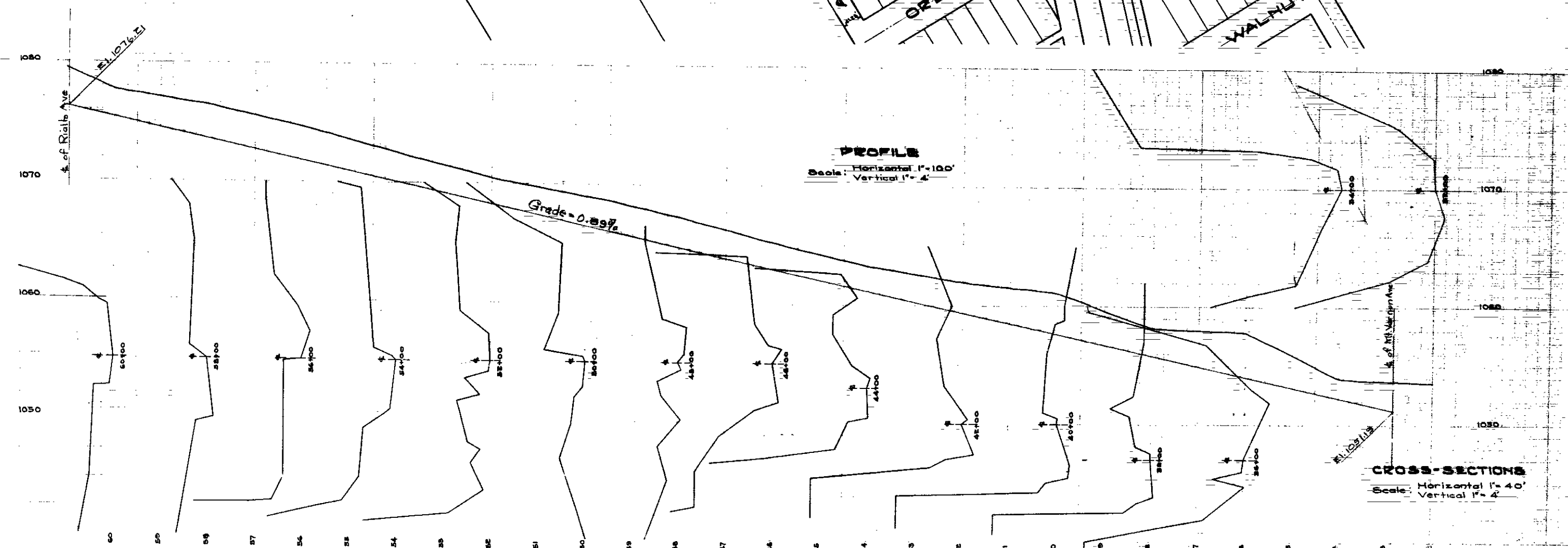
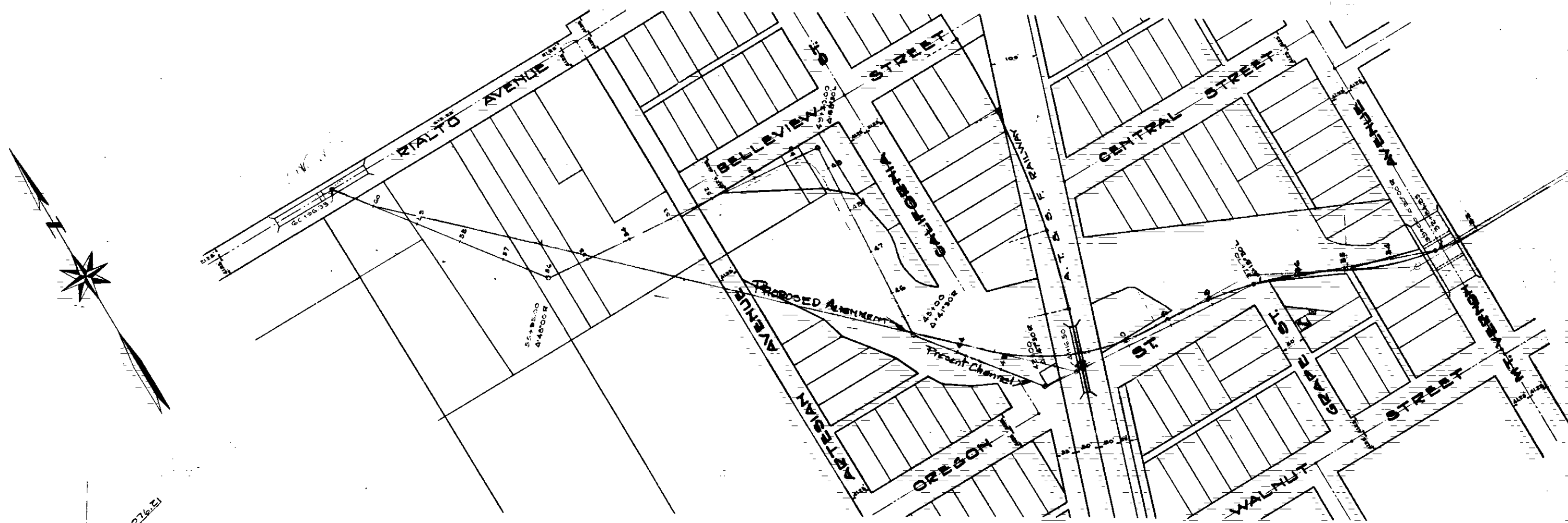


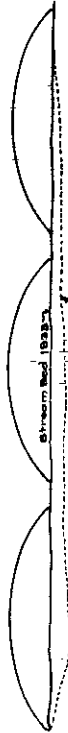
Stream bed 1933
 Station 41+16.00
 Elevation of A.T. & S.P.Ry. Bridge
 Scale 1" = 20'



Stream bed 1937
 Station 51+84.85
 Elevation of Mt. Vernon Avenue Bridge
 Scale 1" = 20'



Stream bed 1933
 Station 41+16.00
 Elevation of A.T. & S.P.Ry. Bridge
 Scale 1" = 20'



Stream bed 1937
 Station 51+84.85
 Elevation of Mt. Vernon Avenue Bridge
 Scale 1" = 20'

